

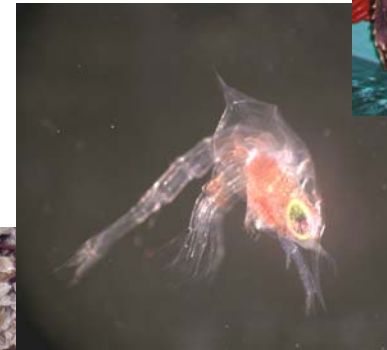
Shellfish Biology Research Laboratory



The highest valued seafood landings in Massachusetts are lobster and scallops. Our laboratory is dedicated to conducting research on the biology, reproduction, behavior, and recruitment processes of these and other invertebrate "shellfish" fishery resources. Issues of primary importance to New England fisheries include lobster shell disease, settlement and growth of juvenile lobsters, and habitat selection processes. One project we are working on is a long-term study of bay scallop reproduction in Nantucket Harbor, site of the only remaining wild bay scallop fishery in the U.S.



Stevens has continuing projects in Alaska, where he is the technical advisor for a start-up project to enhance and rehabilitate stocks of Alaskan king crabs, with funding from Alaska Sea Grant. This project will involve two graduate students who will hatch and raise king crab larvae and conduct research on diets, stocking density, growth, and survival in hatchery and grow-out conditions.



Principal Investigator:
Dr. Bradley Stevens
bstevens@umassd.edu
508-910-6323